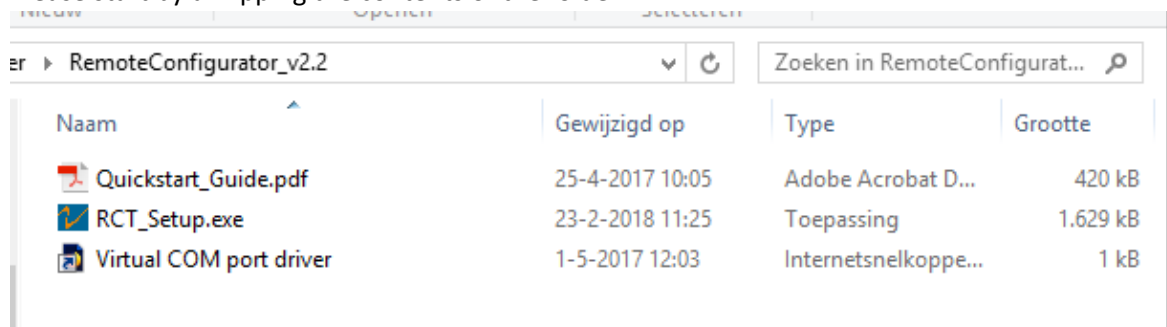


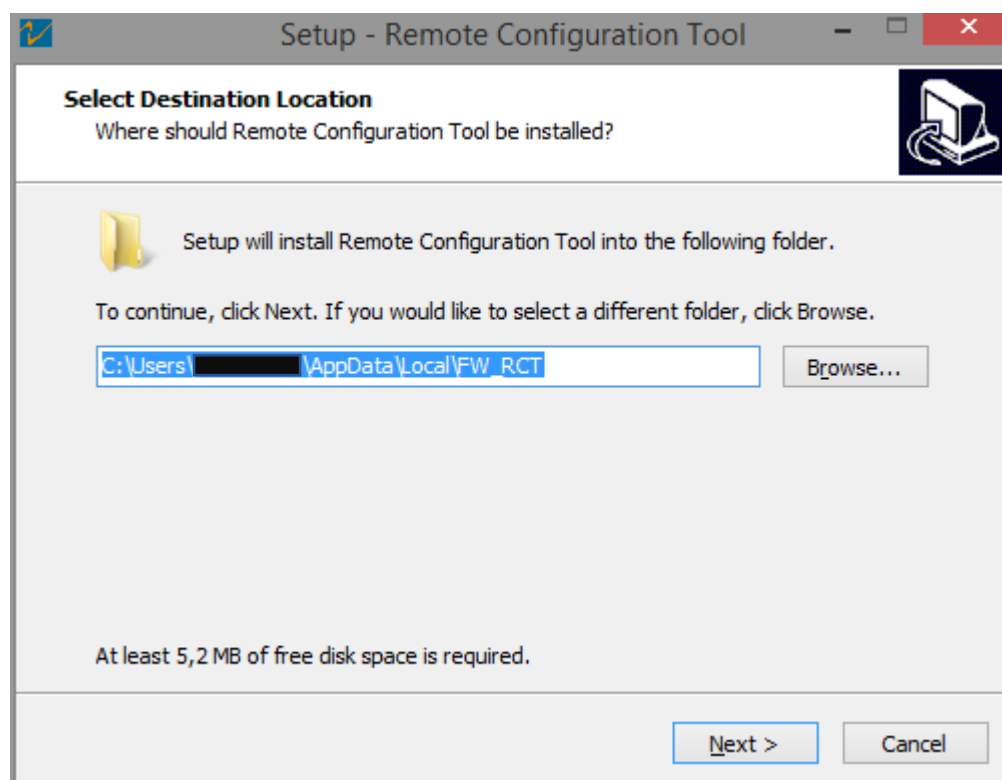
Remote Configuration Quickstart guide

Getting started

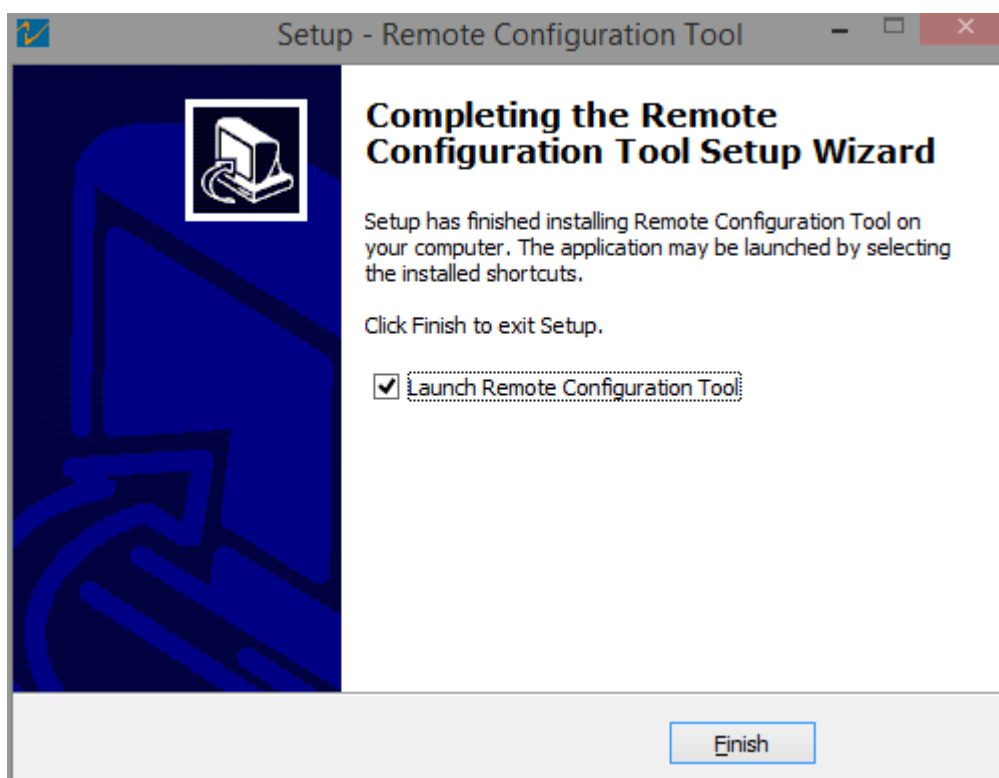
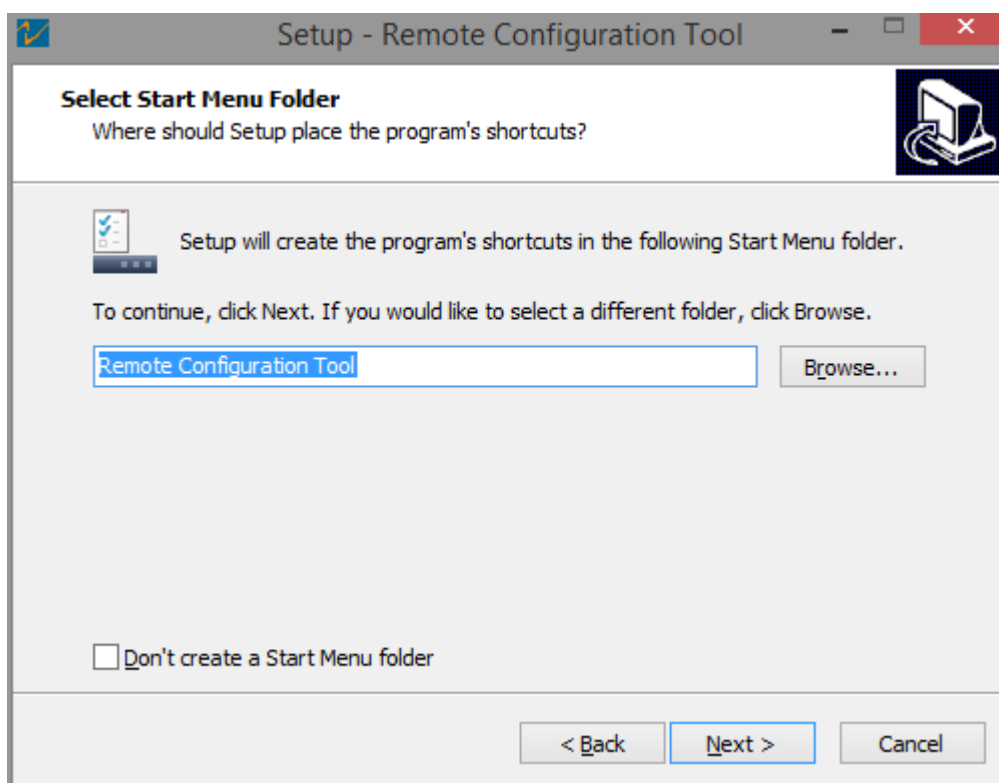
Please start by unzipping the contents of the folder.



Please start the application-installer by double-clicking the RCT_Setup.exe. The install-wizard will now start.



Follow the steps and choose which shortcuts you would like to create.

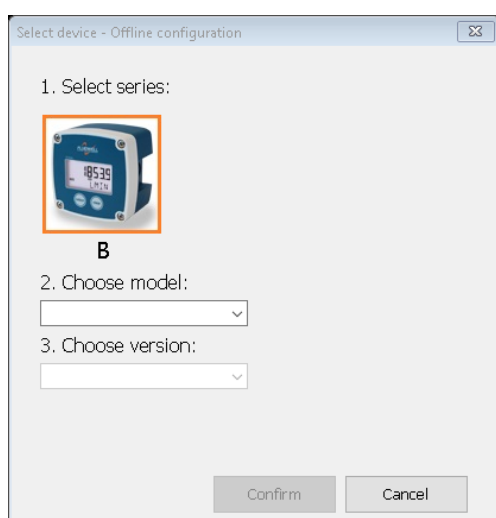
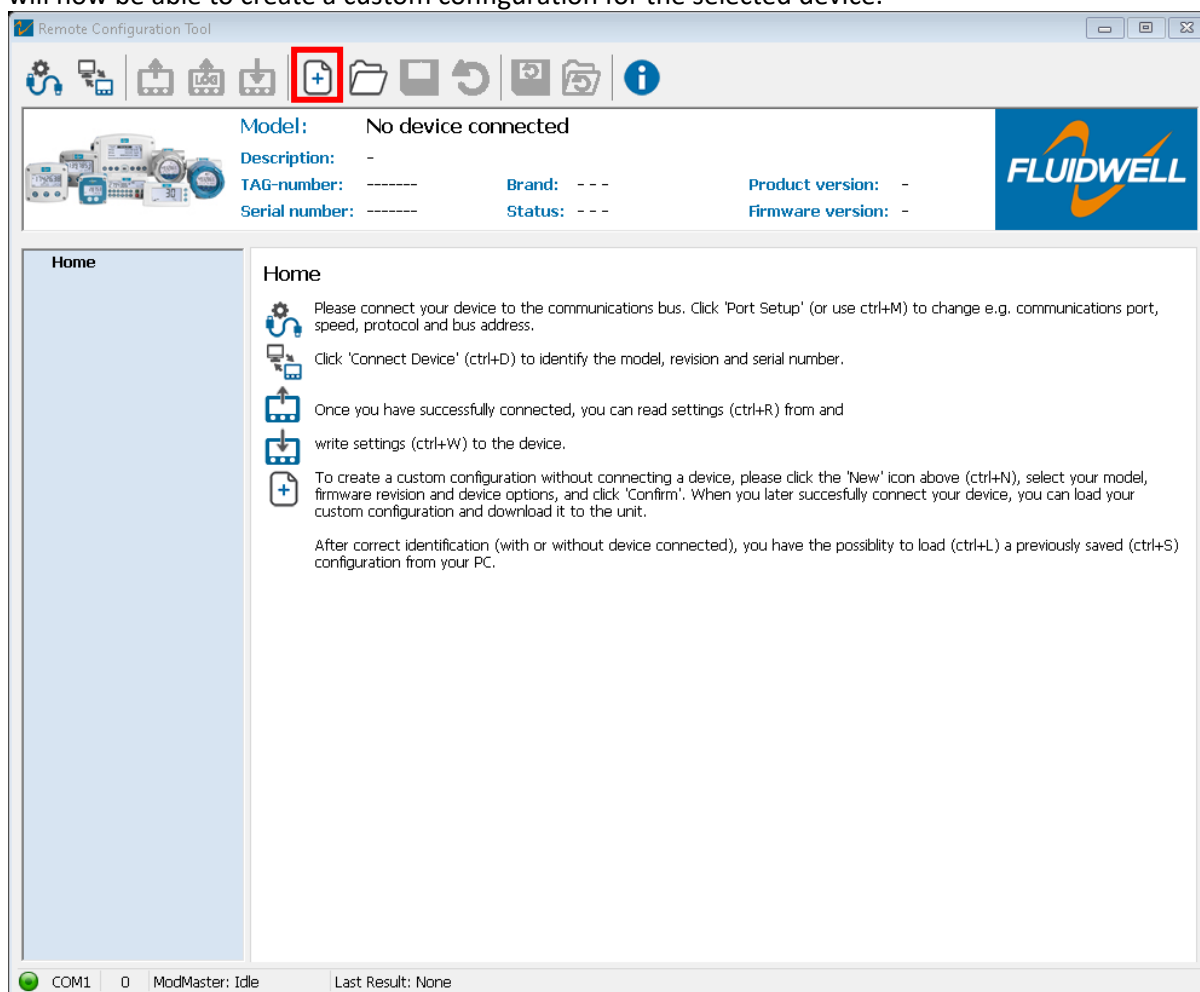


Choose to launch the application when clicking “Finish” or start it from the Startmenu.

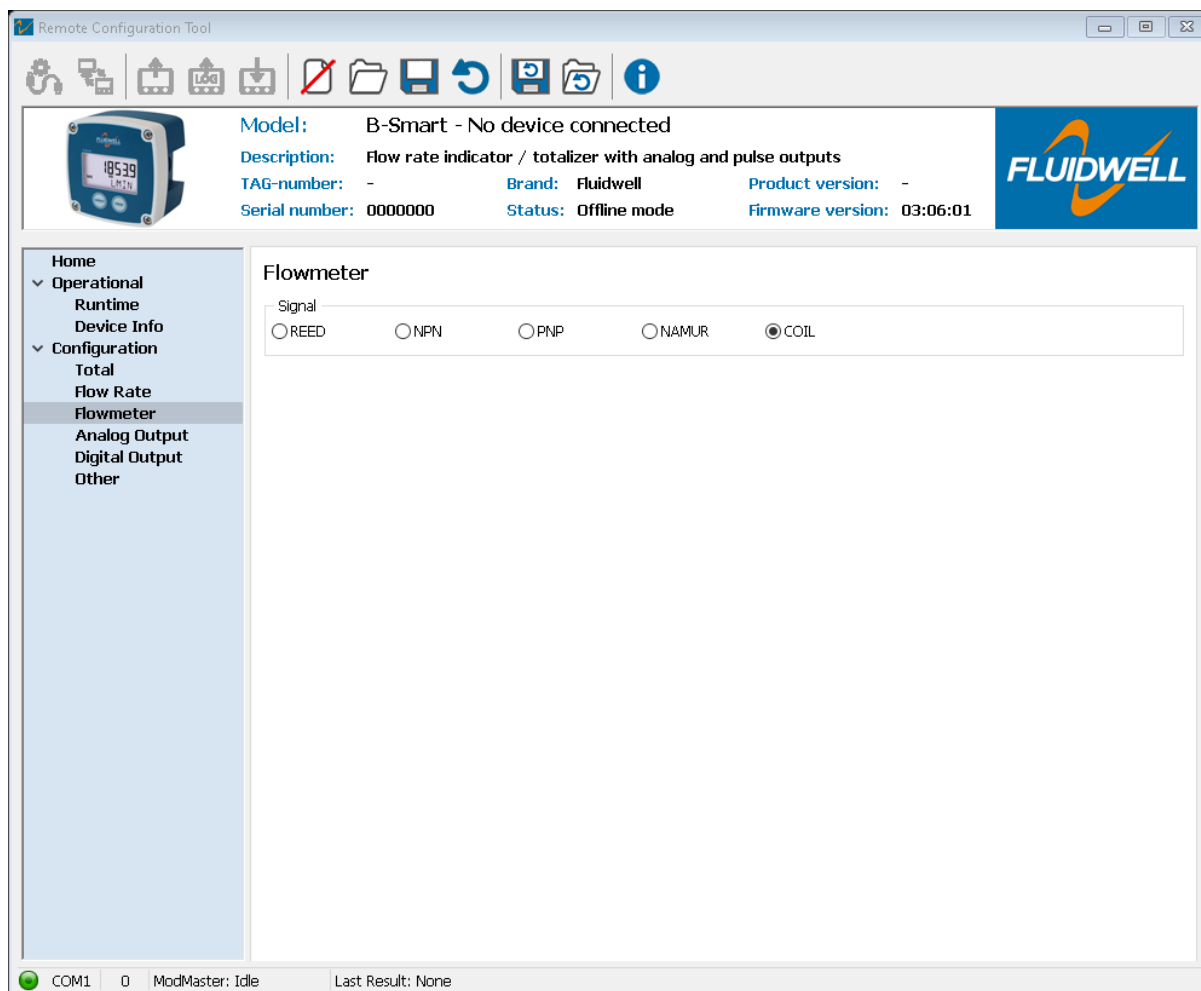
You now have the choice to “connect a device”, or use the tool in “offline configuration” mode.

Custom Configuration

To use the tool in “custom configuration” mode, please click the “New configuration” button. You will now be able to create a custom configuration for the selected device.



In the following example, the “Flowmeter” tab is shown. Each tab has a set of settings that can be changed, corresponding with the manual. You can go through the tabs, and change the settings that need to be changed.



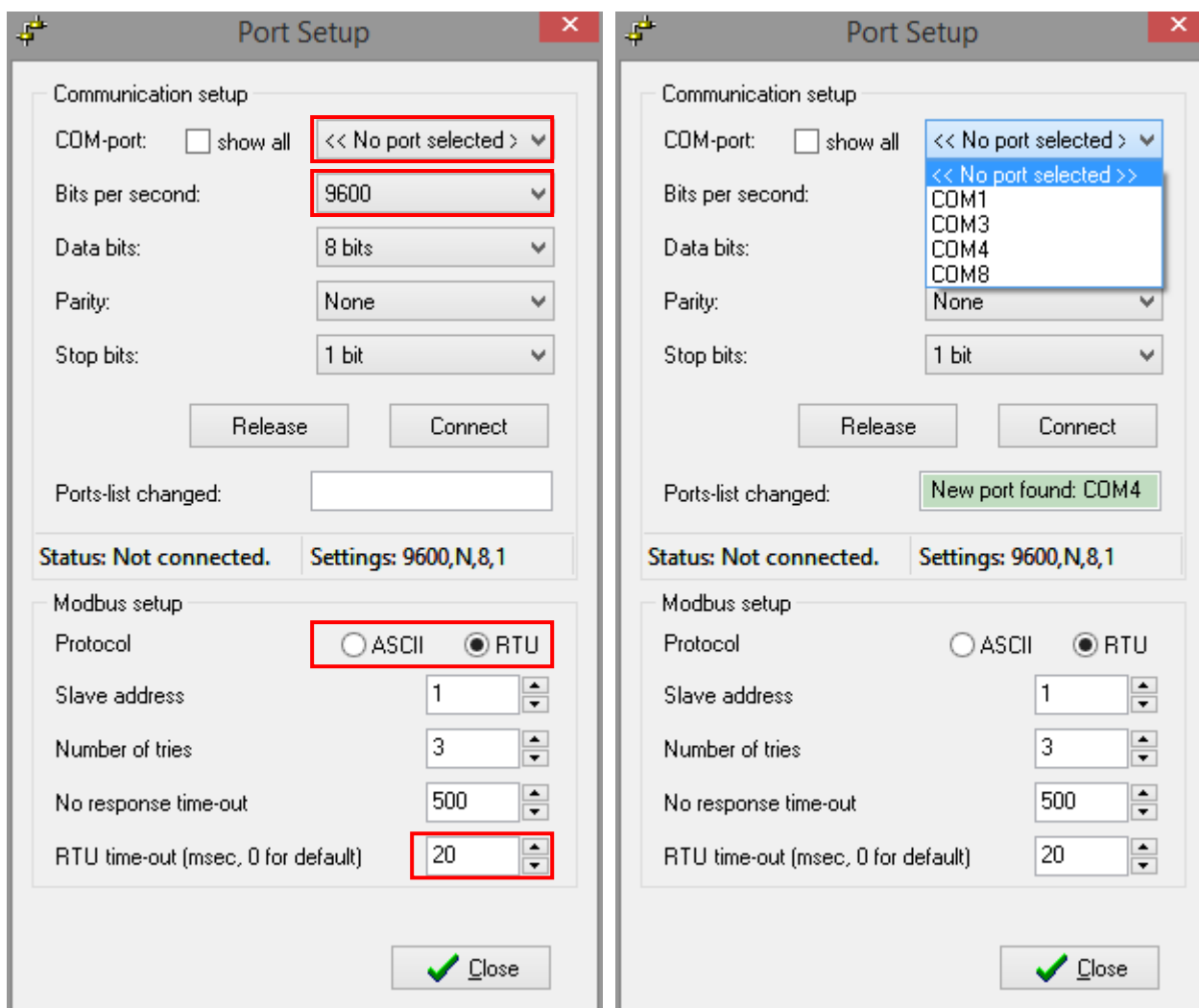
If you wish to save your custom configuration to your PC, you can select “Save Config.”. You are then able to save the configuration to your PC.

If you want to load an existing configuration, you can choose “Load Config.”. You can then select a previously saved configuration from your PC. To restore the values in the tool to the default configuration for the selected model, please choose “Default Config.”.

Please note the “Write to device” and “Read device” buttons are disabled. They will be enabled when a device is connected.

Connecting a device

Please make sure the device is connected to the PC. You will likely have to install the [“Virtual COM port driver”](#) (shortcut to download-page is included on this drive). This is required by Windows to recognize the FTDI chips that are used. Windows will then be able to detect and report the connection as a (virtual) COM port. To connect your device, open the “Port Setup” menu from the HOME-tab. The following window will pop up:

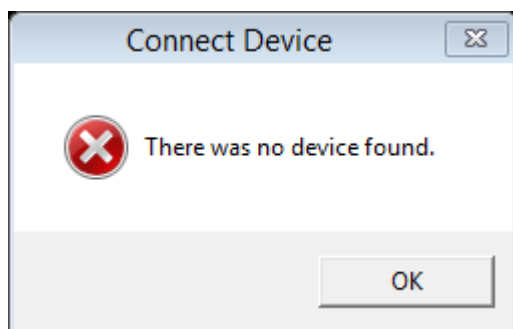


Then select the correct COM-port and speed setting. Please also select the protocol that the device uses. Default is RTU. Please make sure the RTU time-out is set to 20.

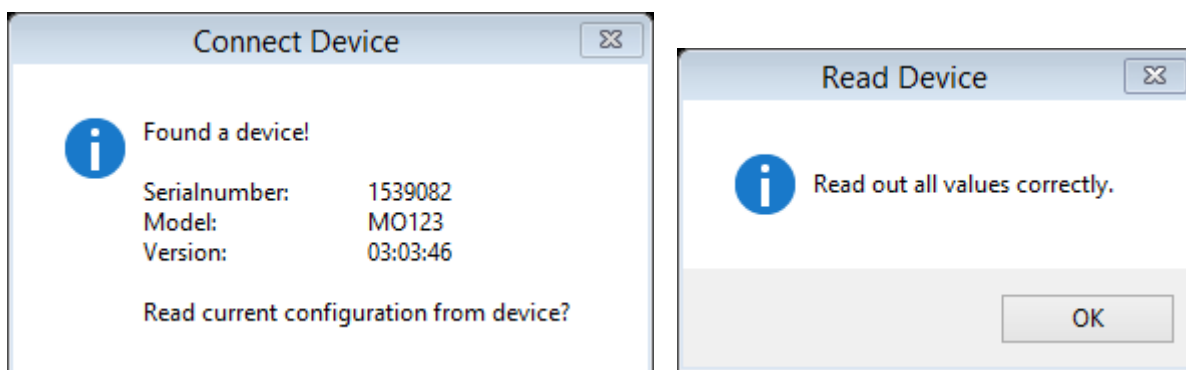
If you are unsure on which port the device is, you can see this by clicking the ports-dropdown before and after connecting your device. You will see which port got removed or added in the “Ports-list changed” field.

After selecting the correct settings, click the “Connect device” button on the HOME-tab (above the “Port Setup” button).

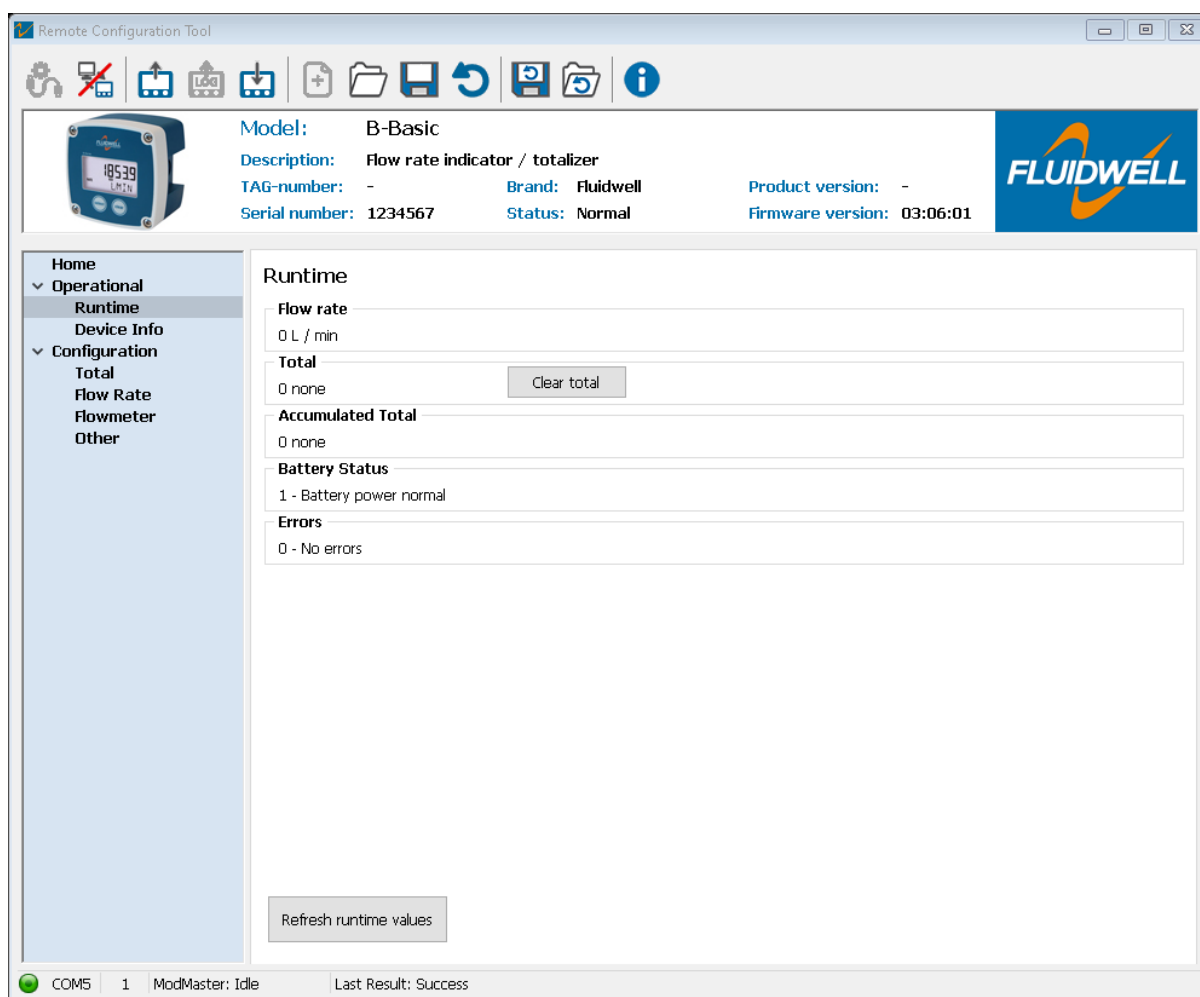
If you get the following notification, please check if the information entered in the “Port Setup” is compatible with the values found in the device (in the Modbus Communication menu).



Once successfully connected, you will get the following notification:



After this, the tool will read the current configuration from the device. When successful, you will see the pop up on the right.

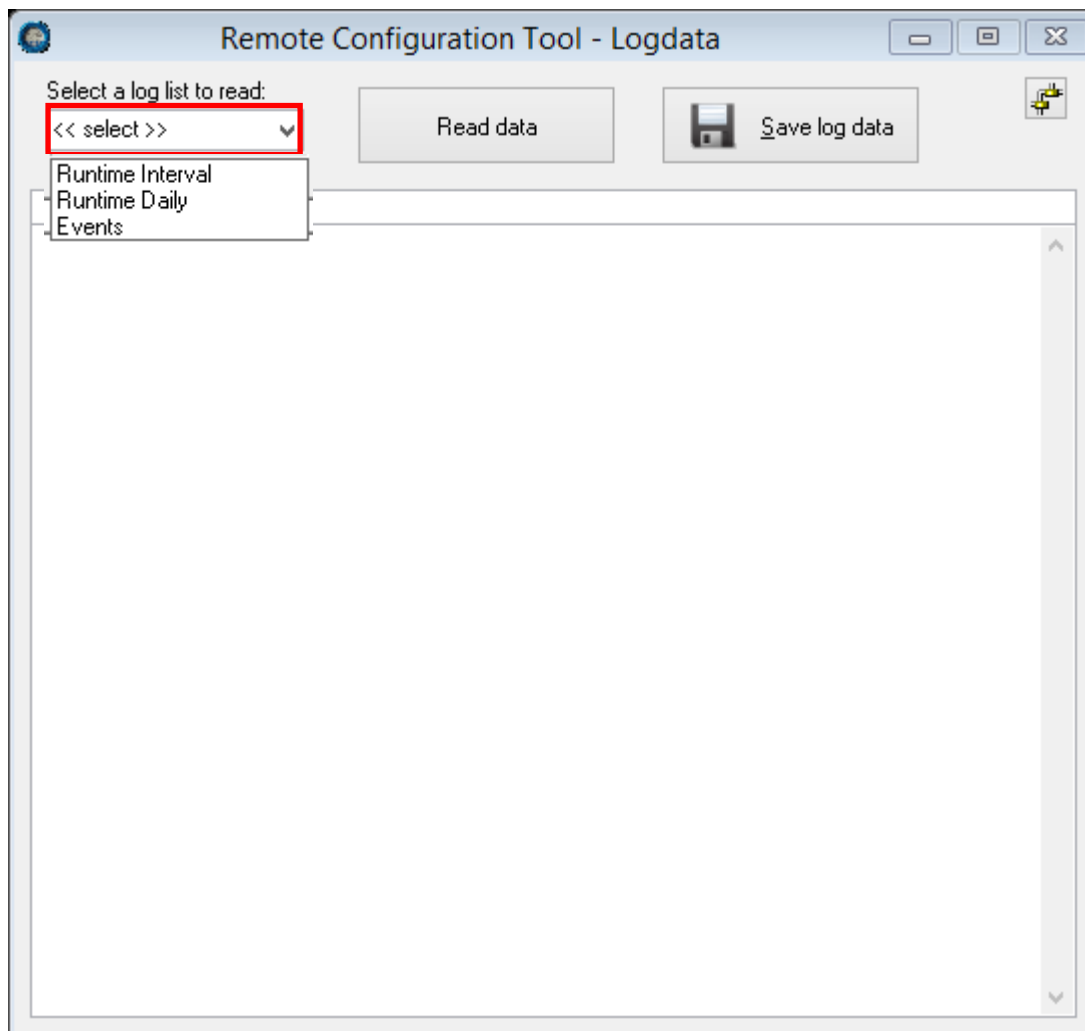


From here you can either start configuring your device, restart your device by selecting the “Restart device” button on the “Device info” tab, or read log data (if supported by your device).

An updated configuration can be saved to your PC, or into the device. The “Save Config.” button saves your custom configuration to your PC. You are free to select a location for the file to be saved. The “Write to device” button writes your configuration into the device.

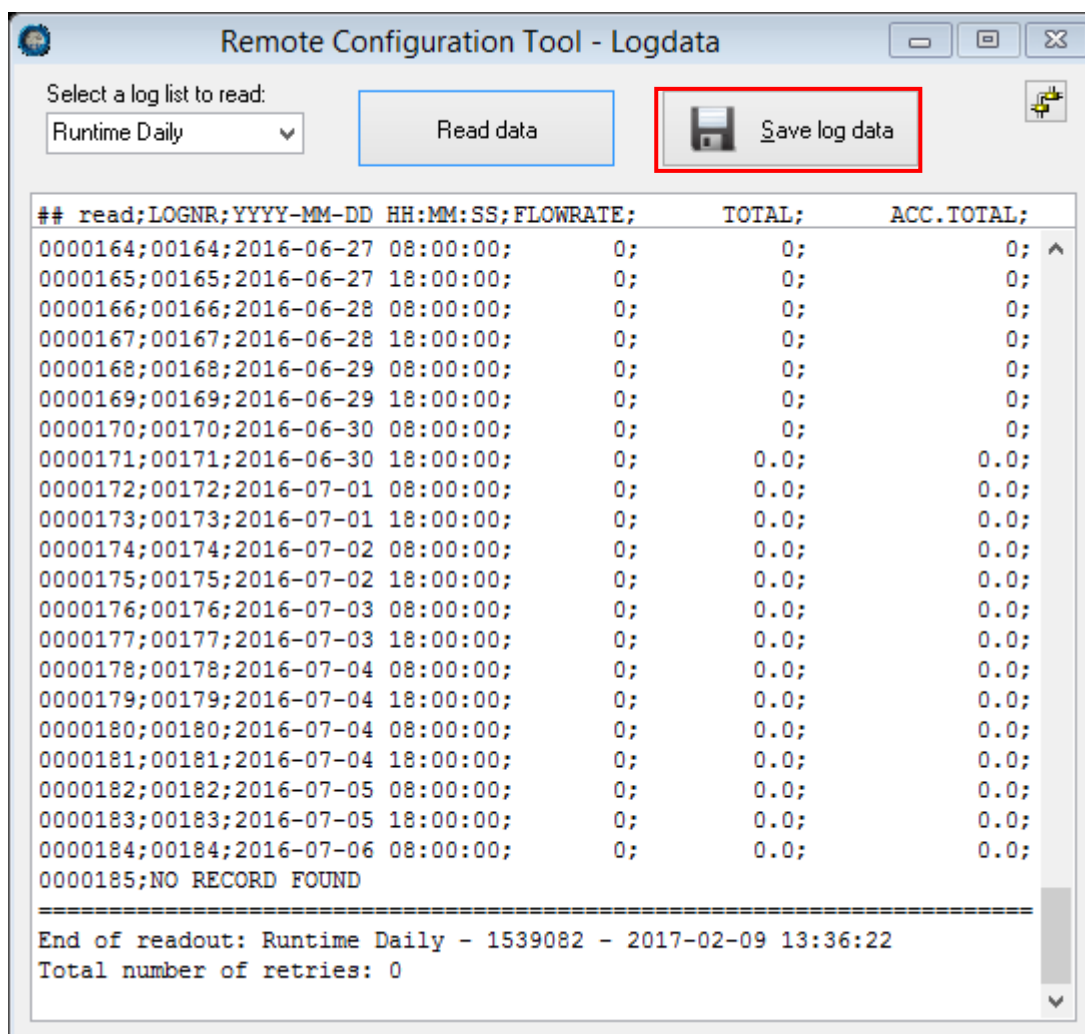
Reading logdata

When your device supports datalogging, it is possible to read and export this data using the Remote Configuration Tool. When selecting the “Read logdata” button on the HOME-tab, the following window will appear:



First, select the list you would like to read from the dropdown box labelled “Select a log list ...”. Once you have selected a list, click the “Read data” button to start reading the log data.

After the data has been read, you can save this to your PC. It will be saved as a .csv file, that you can import into, or open with MS Excel.

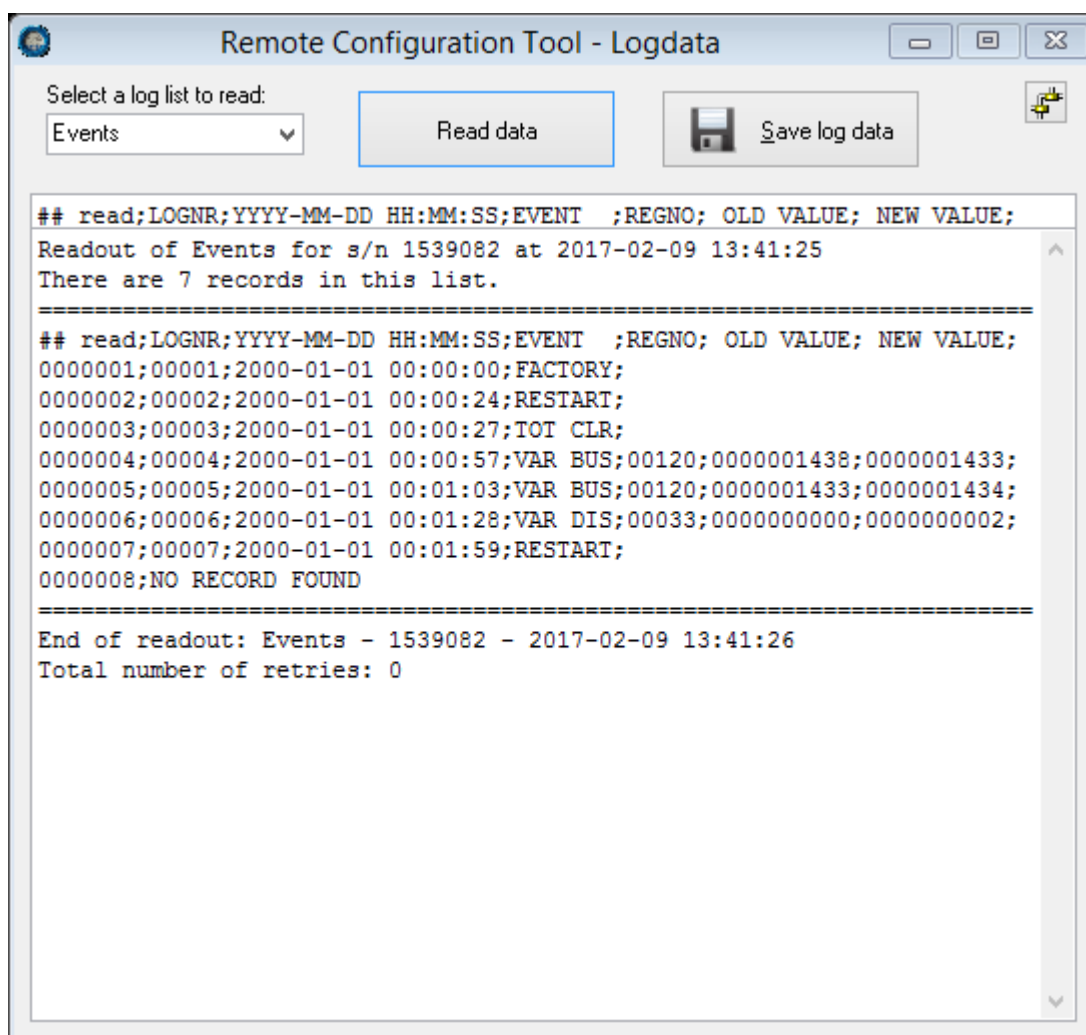


Remote Configuration Tool - Logdata

Select a log list to read:

##	read;LOGNR;YYYY-MM-DD	HH:MM:SS;FLOWRATE;	TOTAL;	ACC. TOTAL;
0000164;	00164;2016-06-27	08:00:00; 0;	0;	0;
0000165;	00165;2016-06-27	18:00:00; 0;	0;	0;
0000166;	00166;2016-06-28	08:00:00; 0;	0;	0;
0000167;	00167;2016-06-28	18:00:00; 0;	0;	0;
0000168;	00168;2016-06-29	08:00:00; 0;	0;	0;
0000169;	00169;2016-06-29	18:00:00; 0;	0;	0;
0000170;	00170;2016-06-30	08:00:00; 0;	0;	0;
0000171;	00171;2016-06-30	18:00:00; 0;	0.0;	0.0;
0000172;	00172;2016-07-01	08:00:00; 0;	0.0;	0.0;
0000173;	00173;2016-07-01	18:00:00; 0;	0.0;	0.0;
0000174;	00174;2016-07-02	08:00:00; 0;	0.0;	0.0;
0000175;	00175;2016-07-02	18:00:00; 0;	0.0;	0.0;
0000176;	00176;2016-07-03	08:00:00; 0;	0.0;	0.0;
0000177;	00177;2016-07-03	18:00:00; 0;	0.0;	0.0;
0000178;	00178;2016-07-04	08:00:00; 0;	0.0;	0.0;
0000179;	00179;2016-07-04	18:00:00; 0;	0.0;	0.0;
0000180;	00180;2016-07-04	08:00:00; 0;	0.0;	0.0;
0000181;	00181;2016-07-04	18:00:00; 0;	0.0;	0.0;
0000182;	00182;2016-07-05	08:00:00; 0;	0.0;	0.0;
0000183;	00183;2016-07-05	18:00:00; 0;	0.0;	0.0;
0000184;	00184;2016-07-06	08:00:00; 0;	0.0;	0.0;
0000185;	NO RECORD FOUND			

=====
 End of readout: Runtime Daily - 1539082 - 2017-02-09 13:36:22
 Total number of retries: 0



The device also saves a number of different events. In the image above some event codes are listed.

Possible events:

FACTORY	Factory defaults
RESTART	Restart
ERRORS	Error
VAR BUS	Variable changed via communication
VAR DIS	Variable change via menu/display
TOT CLR	Total cleared