

Indicators, controllers and monitoring systems for flow, level, pressure and temperature measurement in industrial environments.

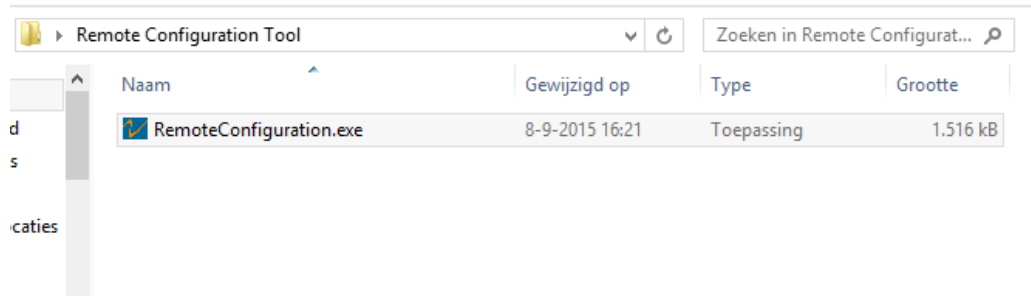


Count on us.

Remote Configuration Quickstart guide

Getting started

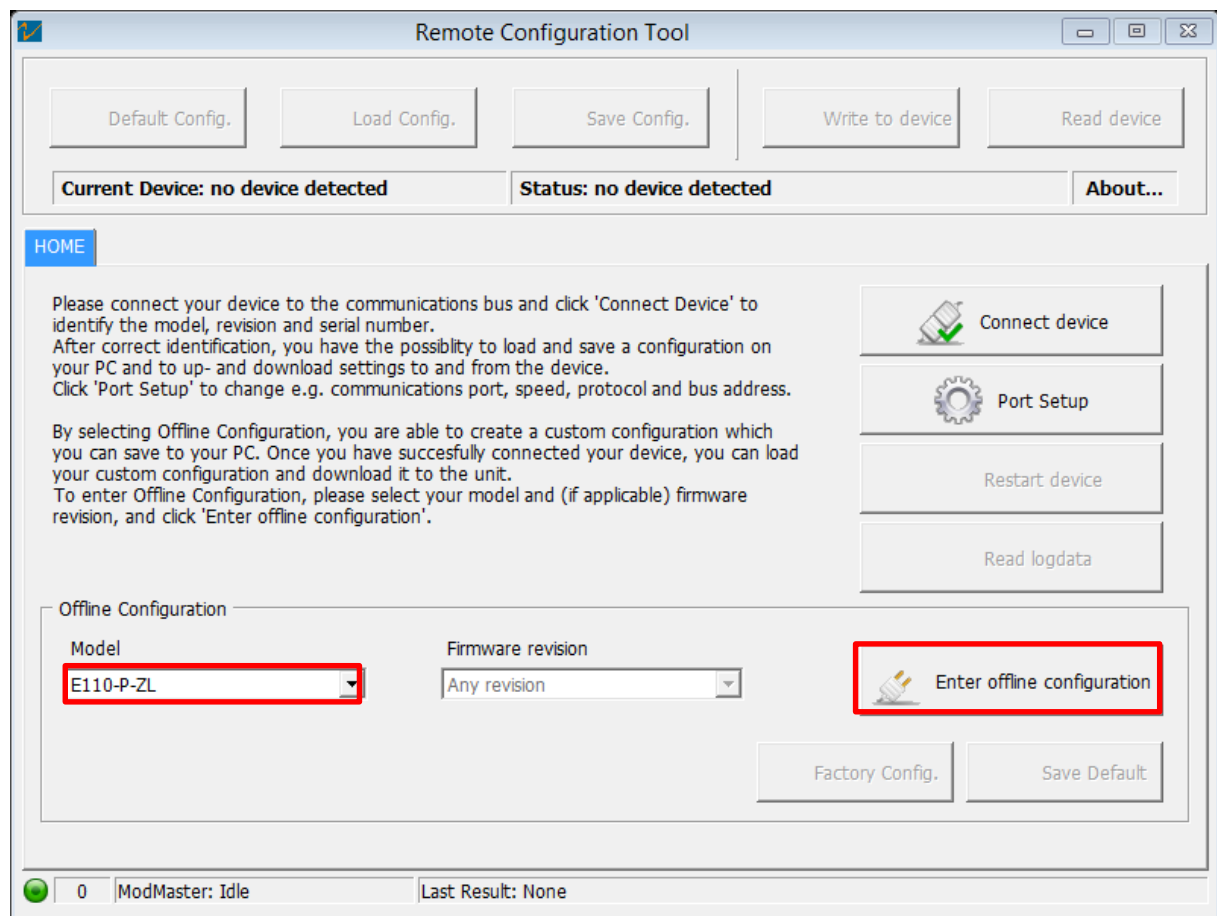
Please start by unzipping the contents of the folder.



Please start the application by double-clicking the RemoteConfiguration.exe. You now have the choice to “connect a device”, or use the tool in “offline configuration” mode.

Offline Configuration

To use the tool in “offline configuration” mode, please select a device from the dropdown labelled “Model”, and click the “Enter offline configuration” button. You will now be able to create a custom configuration for the selected device.



Quality
ISO 9001

www.dekra.nl

Fluidwell bv

P.O. Box 6 • 5460 AA • Veghel
Voltaweg 23 • 5466 AZ • Veghel
The Netherlands

Telephone: +31 (0) 413 - 343 786
Telefax: +31 (0) 413 - 363 443
Email: displays@fluidwell.com
Internet: www.fluidwell.com

Trade Reg. No: 17120985
VAT No: NL8085.29.699.B.01
Bank: ING-Bank
SWIFT Nr / BIC: INGBNL2A

EUR account no: 66.63.96.078
IBAN: NL73 INGB 0666 3960 78
USD account no: 02.20.81.771
IBAN: NL22 INGB 0022 0817 71

All agreements, sales and deliveries are in accordance with our General Terms and Conditions which are available on our website or upon request. Any other conditions are herewith explicitly rejected by us.

Indicators, controllers and monitoring systems for flow, level, pressure and temperature measurement in industrial environments.



Count on us.

In the following example, the “Flowmeter” tab is shown. Each tab has a set of settings that can be changed, corresponding with the manual. You can go through the tabs, and change the settings that need to be changed.

Remote Configuration Tool

Default Config. Load Config. Save Config. Write to device Read device

Current Device: no device detected Status: values need to be read from or written to the device About...

HOME Runtime Values Total Flow Rate Display **Flowmeter** Analog Output Pulse Output Modbus Datalogging Others

Signal

☐ NPN ☐ Reed ☐ PNP ☐ Namur ☒ Coil Low ☐ 12V dc

☐ NPN Low Pass ☐ Reed Low Pass ☐ PNP Low Pass ☐ Coil High ☐ 8.1V dc ☐ 24V dc

Units (automatic unit conversion)

☐ Hand ☒ Auto volume ☐ Auto mass

Unit

☒ L ☐ US GAL ☐ CF ☐ kg ☐ lb

☐ m³ ☐ I GAL ☐ Oil BBL ☐ ton ☐ US ton

K-Factor

1 Value = 1 pulses / No unit

Decimals K-Factor

☒ 0 ☐ 1 ☐ 2 ☐ 3 ☐ 4 ☐ 5 ☐ 6

0 ModMaster: Idle Last Result: None

If you wish to save your custom configuration to your PC, you can select “Save Config.”. You are then able to save the configuration to your PC.

If you want to load an existing configuration, you can choose “Load Config.”. You can then select a previously saved configuration from your PC. To restore the values in the tool to the default configuration for the selected model, please choose “Default Config.”.

Please note the “Write to device” and “Read device” buttons are disabled. They will be enabled when a device is connected.



Quality
ISO 9001
www.dekra.nl

Fluidwell bv

P.O. Box 6 • 5460 AA • Veghel
Voltaweg 23 • 5466 AZ • Veghel
The Netherlands

Telephone: +31 (0) 413 - 343 786

Telefax: +31 (0) 413 - 363 443

Email: displays@fluidwell.com

Internet: www.fluidwell.com

Trade Reg. No: 17120985

VAT No: NL8085.29.699.B.01

Bank: ING-Bank

SWIFT Nr / BIC: INGBNL2A

EUR account no: 66.63.96.078

IBAN: NL73 INGB 0666 3960 78

USD account no: 02.20.81.771

IBAN: NL22 INGB 0022 0817 71

All agreements, sales and deliveries are in accordance with our General Terms and Conditions which are available on our website or upon request. Any other conditions are herewith explicitly rejected by us.

Indicators, controllers and monitoring systems for flow, level, pressure and temperature measurement in industrial environments.



Count on us.

Connecting a device

Please make sure the device is connected to the PC (e.g., accessories ACE01 or ACE02).

If you wish to connect the tool to a device, please enter the “Port Setup” by clicking the “Port Setup” button on the right, on the HOME-tab.

Remote Configuration Tool

Default Config. Load Config. Save Config. Write to device Read device

Current Device: no device detected Status: no device detected About...

HOME

Please connect your device to the communications bus and click 'Connect Device' to identify the model, revision and serial number. After correct identification, you have the possibility to load and save a configuration on your PC and to up- and download settings to and from the device. Click 'Port Setup' to change e.g. communications port, speed, protocol and bus address.

By selecting Offline Configuration, you are able to create a custom configuration which you can save to your PC. Once you have successfully connected your device, you can load your custom configuration and download it to the unit. To enter Offline Configuration, please select your model and (if applicable) firmware revision, and click 'Enter offline configuration'.

Connect device

Port Setup

Restart device

Read logdata

Enter offline configuration

Factory Config. Save Default

Offline Configuration

Model Firmware revision

Any revision

0 ModMaster: Idle Last Result: None



Quality
ISO 9001
www.dekra.nl

Fluidwell bv

P.O. Box 6 • 5460 AA • Veghel
Veltaweg 23 • 5466 AZ • Veghel
The Netherlands

Telephone: +31 (0) 413 - 343 786
Telefax: +31 (0) 413 - 363 443
Email: displays@fluidwell.com
Internet: www.fluidwell.com

Trade Reg. No: 17120985
VAT No: NL8085.29.699.B.01
Bank: ING-Bank
SWIFT Nr / BIC: INGBNL2A

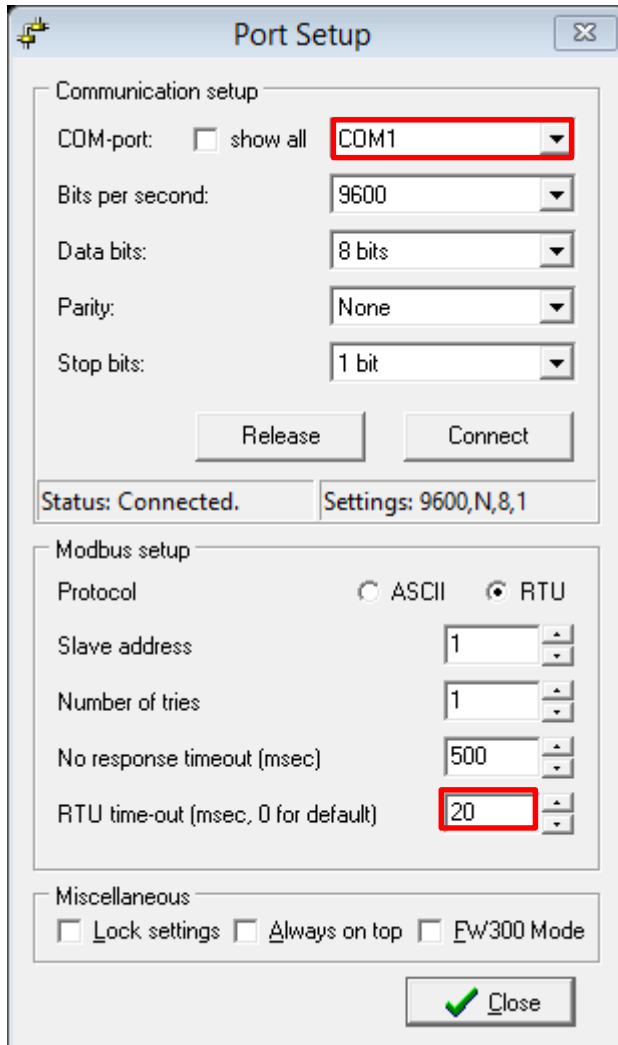
EUR account no: 66.63.96.078
IBAN: NL73 INGB 0666 3960 78
USD account no: 02.20.81.771
IBAN: NL22 INGB 0022 0817 71

All agreements, sales and deliveries are in accordance with our General Terms and Conditions which are available on our website or upon request. Any other conditions are herewith explicitly rejected by us.

Indicators, controllers and monitoring systems for flow, level, pressure and temperature measurement in industrial environments.

Count on us.

The following window will pop up:



Please select the correct COM-port.

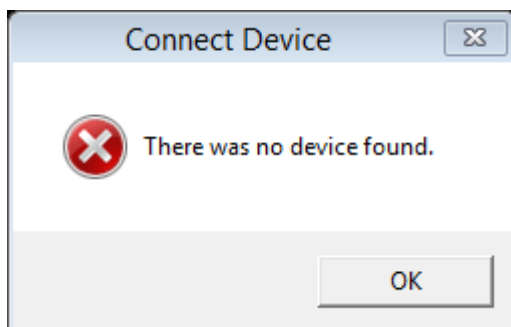
Please select the correct speed setting.

Please select the protocol that the device uses. Default is RTU.

Please make sure the RTU time-out is set to 20.

After selecting the correct settings, click the “Connect device” button on the HOME-tab (above the “Port Setup” button).

If you get the following notification, please check if the information entered in the “Port Setup” is compatible with the values found in the device (in the Modbus Communication menu).

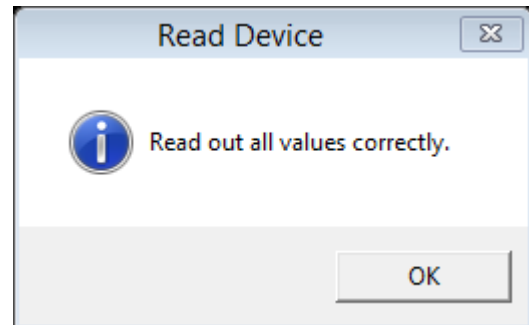
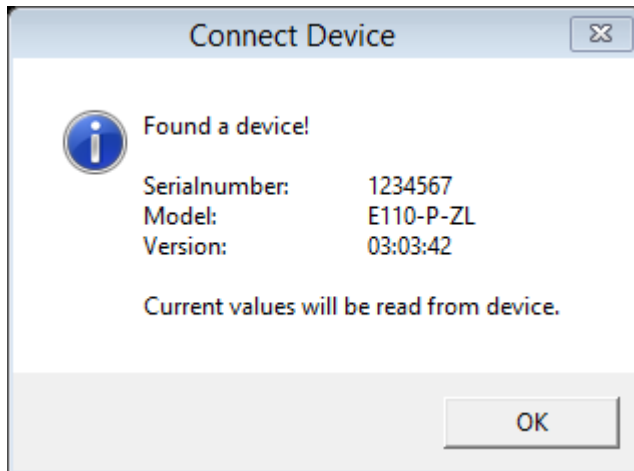


Indicators, controllers and monitoring systems for flow, level, pressure and temperature measurement in industrial environments.



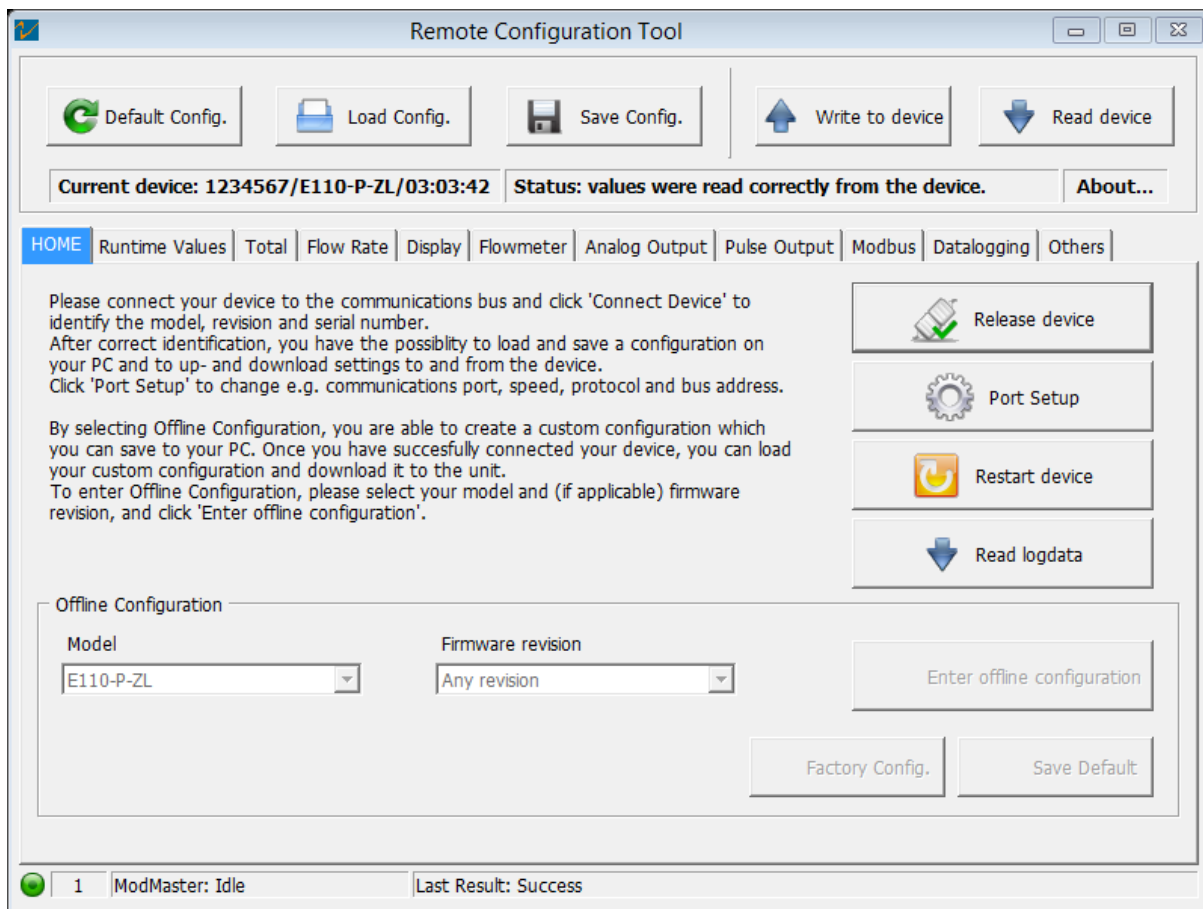
Count on us.

Once successfully connected, you will get the following notification:



After this, the tool will read the current configuration from the device. When successful, you will see the pop up on the right.

You will be returned to the HOME-tab.



Quality
ISO 9001

www.dekra.nl

Fluidwell bv

P.O. Box 6 • 5460 AA • Veghel
Voltaweg 23 • 5466 AZ • Veghel
The Netherlands

Telephone: +31 (0) 413 - 343 786

Telefax: +31 (0) 413 - 363 443

Email: displays@fluidwell.com

Internet: www.fluidwell.com

Trade Reg. No: 17120985

VAT No: NL8085.29.699.B.01

Bank: ING-Bank

SWIFT Nr / BIC: INGBNL2A

EUR account no: 66.63.96.078

IBAN: NL73 INGB 0666 3960 78

USD account no: 02.20.81.771

IBAN: NL22 INGB 0022 0817 71

All agreements, sales and deliveries are in accordance with our General Terms and Conditions which are available on our website or upon request. Any other conditions are herewith explicitly rejected by us.

Indicators, controllers and monitoring systems for flow, level, pressure and temperature measurement in industrial environments.



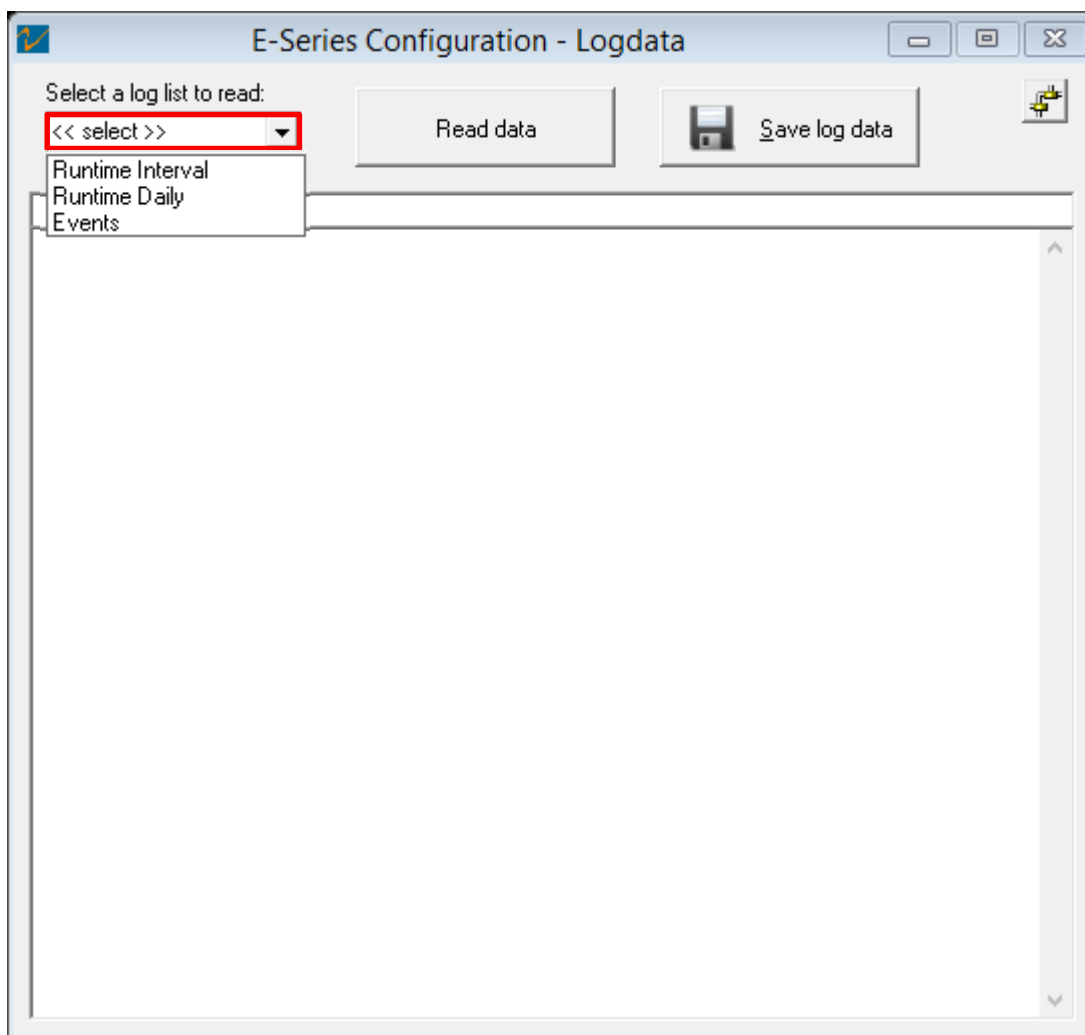
Count on us.

From here you can either start configuring your device, restart your device by selecting the “Restart device” button on the right, or read log data (if supported by your device).

An updated configuration can be saved to your PC, or into the device. The “Save Config.” button saves your custom configuration to your PC. You are free to select a location for the file to be saved. The “Write to device” button writes your configuration into the device.

Reading logdata

When your device supports datalogging, it is possible to read and export this data using the Remote Configuration Tool. When selecting the “Read logdata” button on the HOME-tab, the following window will appear:



First, select the list you would like to read from the dropdown box labelled “Select a log list ...”. Once you have selected a list, click the “Read data” button to start reading the log data.



Quality
ISO 9001

Fluidwell bv

P.O. Box 6 • 5460 AA • Veghel
Voltaweg 23 • 5466 AZ • Veghel
The Netherlands

Telephone: +31 (0) 413 - 343 786

Telefax: +31 (0) 413 - 363 443

Email: displays@fluidwell.com

Internet: www.fluidwell.com

Trade Reg. No: 17120985

VAT No: NL8085.29.699.B.01

Bank: ING-Bank

SWIFT Nr / BIC: INGBNL2A

EUR account no: 66.63.96.078

IBAN: NL73 INGB 0666 3960 78

USD account no: 02.20.81.771

IBAN: NL22 INGB 0022 0817 71

All agreements, sales and deliveries are in accordance with our General Terms and Conditions which are available on our website or upon request. Any other conditions are herewith explicitly rejected by us.

Indicators, controllers and monitoring systems for flow, level, pressure and temperature measurement in industrial environments.



Count on us.

E-Series Configuration - Logdata

Select a log list to read:
 Runtime Interval ▼ Read data Save log data

##	read;LOGNR;YYYY-MM-DD	HH:MM:SS;FLOWRATE;	TOTAL;	ACC. TOTAL;
0000013;00013;2015-09-08	15:57:00;	0;	0;	0;
0000014;00014;2015-09-08	15:58:00;	0;	0;	0;
0000015;00015;2015-09-08	15:59:00;	0;	0;	0;
0000016;00016;2015-09-08	16:00:00;	0;	0;	0;
0000017;00017;2015-09-08	16:01:00;	0;	0;	0;
0000018;00018;2015-09-08	16:02:00;	0;	0;	0;
0000019;00019;2015-09-08	16:03:00;	0;	0;	0;
0000020;00020;2015-09-08	16:04:00;	0;	0;	0;
0000021;00021;2015-09-08	16:05:00;	0;	0;	0;
0000022;00022;2015-09-08	16:06:00;	0;	0;	0;
0000023;00023;2015-09-08	16:07:00;	0;	0;	0;
0000024;00024;2015-09-08	16:08:00;	0;	0;	0;
0000025;00025;2015-09-08	16:09:00;	0;	0;	0;
0000026;00026;2015-09-08	16:10:00;	0;	0;	0;
0000027;00027;2015-09-08	16:11:00;	0;	0;	0;
0000028;00028;2015-09-08	16:12:00;	0;	0;	0;
0000029;00029;2015-09-08	16:13:00;	0;	0;	0;
0000030;00030;2015-09-08	16:14:00;	0;	0;	0;
0000031;00031;2015-09-08	16:15:00;	0;	0;	0;
0000032;00032;2015-09-08	16:16:00;	0;	0;	0;
0000033;00033;2015-09-08	16:17:00;	0;	0;	0;
0000034;NO RECORD FOUND				

=====
 End of readout: Runtime Interval - 1234567 - 2015-09-08 16:17:29
 Total number of retries: 0

After the data has been read, you can save this to your PC. It will be saved as a .csv file, that you can import into, or open with MS Excel.



Quality
ISO 9001
www.dekra.nl

Fluidwell bv

P.O. Box 6 • 5460 AA • Veghel
 Voltaweg 23 • 5466 AZ • Veghel
 The Netherlands

Telephone: +31 (0) 413 - 343 786

Telefax: +31 (0) 413 - 363 443

Email: displays@fluidwell.com

Internet: www.fluidwell.com

Trade Reg. No: 17120985

VAT No: NL8085.29.699.B.01

Bank: ING-Bank

SWIFT Nr / BIC: INGBNL2A

EUR account no: 66.63.96.078

IBAN: NL73 INGB 0666 3960 78

USD account no: 02.20.81.771

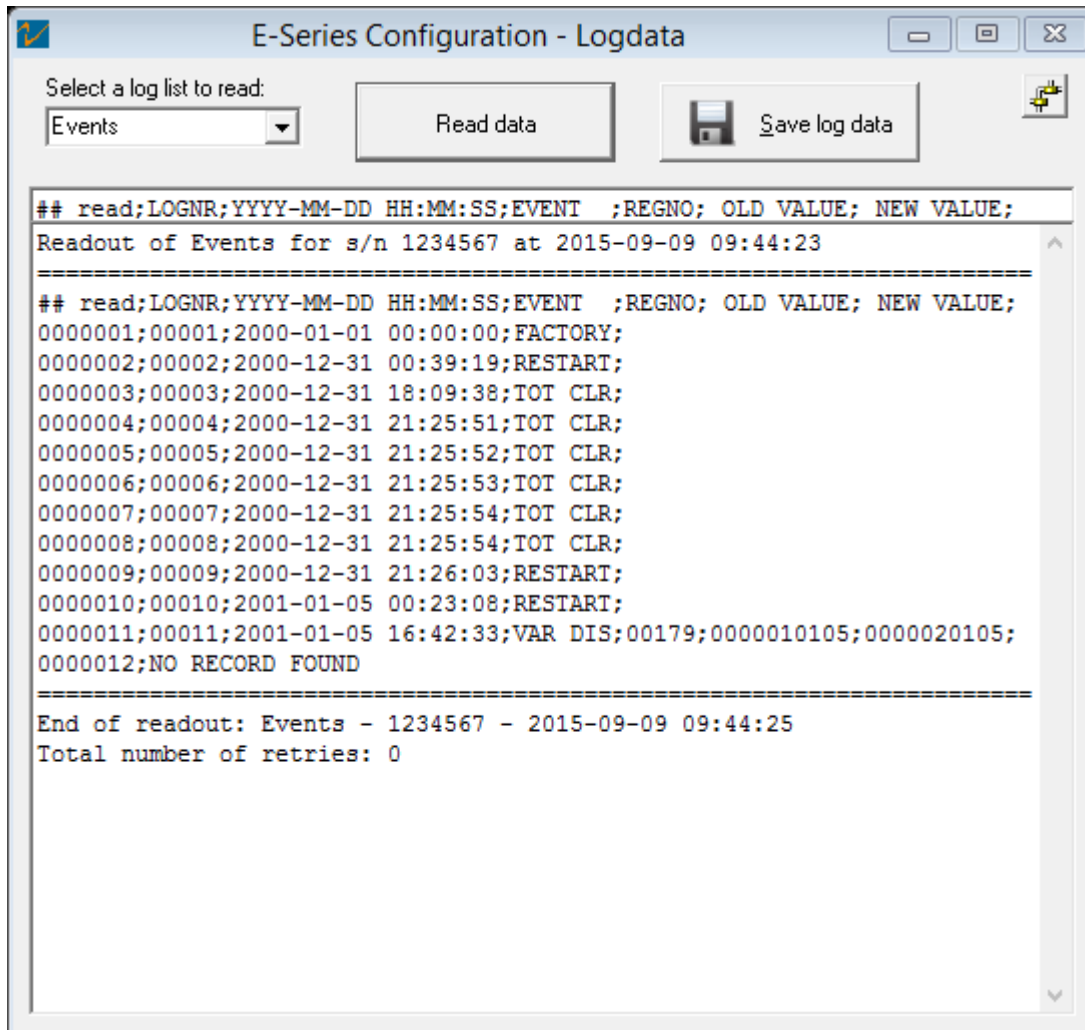
IBAN: NL22 INGB 0022 0817 71

All agreements, sales and deliveries are in accordance with our General Terms and Conditions which are available on our website or upon request. Any other conditions are herewith explicitly rejected by us.

Indicators, controllers and monitoring systems for flow, level, pressure and temperature measurement in industrial environments.



Count on us.



The device also saves a number of different events. In the image above some event codes are listed.

Possible events:

FACTORY	Factory defaults
RESTART	Restart
ERRORS	Error
VAR BUS	Variable changed via communication
VAR DIS	Variable change via menu/display
TOT CLR	Total cleared



Fluidwell bv
P.O. Box 6 • 5460 AA • Veghel
Voltaweg 23 • 5466 AZ • Veghel
The Netherlands

Telephone: +31 (0) 413 - 343 786
Telefax: +31 (0) 413 - 363 443
Email: displays@fluidwell.com
Internet: www.fluidwell.com

Trade Reg. No: 17120985
VAT No: NL8085.29.699.B.01
Bank: ING-Bank
SWIFT Nr / BIC: INGBNL2A

EUR account no: 66.63.96.078
IBAN: NL73 INGB 0666 3960 78
USD account no: 02.20.81.771
IBAN: NL22 INGB 0022 0817 71

All agreements, sales and deliveries are in accordance with our General Terms and Conditions which are available on our website or upon request. Any other conditions are herewith explicitly rejected by us.